



KYRNELLA®

NATURE COSMETICS

FACE ESSENTIAL CARES

*Is it from a Maldives lagoon... ?*



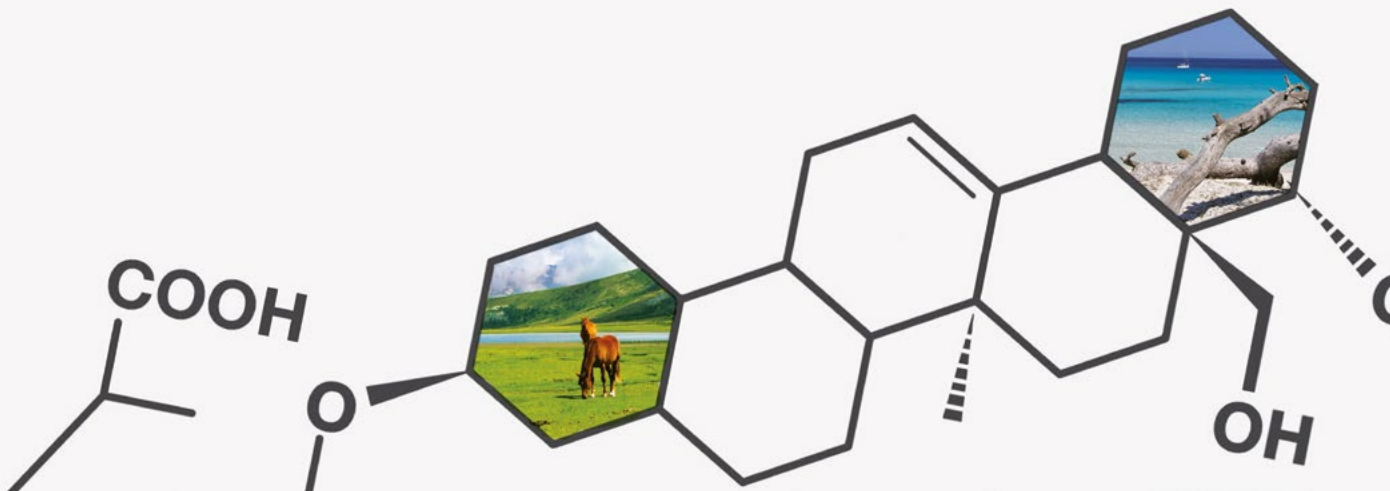
... Or from Iceland highlands ?





Not at all...

All those landscapes are from Corsica...





Kyrnella Nature Cosmetics was born on the Island of Beauty, nestled in the heart of the Mediterranean Sea, where its scrub releases scents and precious elixirs. And combining both aromatherapy and the benefits of the natural and organic extracts allows the Kyrnella Nature Cosmetics line of products to be distinctively efficient.



Corsica, the island of beauty, is full of unique treasures such as Immortelle, Honey or Chestnut. These Corsican ingredients are very specific and will enhance the beauty of the skin for men and women.



---

# Essential Oil

## *[ definition ]*

---

An essential oil is a concentrated hydrophobic liquid containing volatile aroma compounds from plants. Essential oils are also known as volatile oils, ethereal oils, or aetherolea, or simply as the «oil of» the plant from which they were extracted. An oil is «essential» in the sense that it carries a distinctive scent, or essence, of the plant.

In most cases , the essential oil of a plant is not limited to a single property. This multiplicity of possible actions is due to the complex composition of oils, one is rarely identical to another, even in the case of plant extracts which have therapeutic properties very close.

This is also what makes essential oils so magic, for the same overall therapeutic effect , different mixtures can generate specific synergies, with their own scents and other benefits effects.

Schematically, we can say that essential oils have a direct and indirect actions .

Of the 800,000 species of plants , aromatic plants capable of synthesizing oils are few. Only 10% of the plant kingdom can do it, these aromatic plants show a significant degree of sophistication.



We only work with certified essential oils :  
« Essential oils organic agriculture»

European legislation sets the framework for what we call organic farming (as opposed to conventional agriculture ) : it provides the rules production, labeling and inspection by specialized agents.

The basic rules are : banning the use of chemical fertilizers and pesticides or synthetic herbicides . The use of genetically modified organisms (GMOs) is also prohibited. Only products from organic agriculture can use this logo which is valid throughout Europe. Our products are manufactured in laboratories that use only ingredients that are approved by ECOCERT.

You have the guarantee that our ingredients have been properly controlled and certified to the applicable standard for organic agriculture.



ECOCERT is an independent certification control body, whose activity is regulated by law. It is accredited to issue, in particular, the label « Organic Agriculture ».

---

# Immortelle

[ *helichrysum italicum* ]

---

## AN ANTI-AGEING ACTION, NATURALLY EFFICIENT.

The Immortelle, symbol of the Corsican scrub, originally named in Latin *Helichrysum Italicum*, is widely known for its exceptional regenerating and anti-free radical properties.

The essential oil of Immortelle used in the line of products of KYRNELLA Nature Cosmetics is exclusively obtained of fresh flowering tops. The active ingredients (acetate of neryl, italidiones and  $\beta$ -dicetones), are highly concentrated and allow a restructuring action by increasing the collagen rate favourably.

And the Corsican Immortelle also reduces blotchiness and brown discoloration of aging.



---

# Immortelle de Corse

[ *helichrysum italicum* ]

---

Flowering tops of *Helichrysum italicum* are distilled to produce essential oil. There are several chemotypes. Chemotypes subspecies *microphyllum* and *serotinum* seem to be the most popular ones. Their essential oils contain monoterpenes, sesquiterpenes, terpene ester, neryl acetate and a particular ketone, the italidione.

They have antioxidant, antibacterial and antifungal properties. These are also potent analgesics.

Monoterpenes :  $\alpha$ -pinene,  $\beta$ -pinene, d-limonene,  $\gamma$ -curcumene,  
Sesquiterpene  $\beta$ -carophyllene  
Alcohols : linalol, geraniol, nerol, furfural  
Esters : neryl acetate, geranyal acetate  
Aldehydes : isovaleric  
Ketones : diones , italidione other  $\beta$ -diketones  
Phenol : eugenol.

IMPORTANT chemical characteristics:  
Diketone content : italidione ; 1 and 2 (11 %)

---

## Immortelle de Corse [ *helichrysum italicum* ]

---

Italidiones that are in the *Helichrysum italicum*, has anti-hematoma properties (Bensouilah and Buck, 2006)

Diones are nonexistent in different *Helichrysum italicum* pushing out of Corsica, this element is required for treatment against couperose. It is 100 times more potent than Arnica.

Ester content : specifically neryl acetate

Original Swiss Aromatics (OSA) states that the Corsican essential oil is rich in esters and is therefore indicated to regenerate the epidermis.

Neryl acetate 45% ,whereas it would have 10 % of this element to receive reconstruction of collagen.

Observations also indicate antispasmodic qualities, excellent for reducing muscle pain and spasms. The GC / MS indicates that the constituents key chemical for this oil are: esters : neryl acetate (43%) while it is difficult to find more than 5% in other *hélichryses*.

---

# Immortelle de Corse

[ *helichrysum italicum* ]

---

## Anti-ageing face cream with essential oil of Immortelle

[ 50 ml ]

---



### PRECIOUS ANTI-AGEING

The mighty anti-ageing effects of the Immortelle increase the cell regeneration. Day after day, it strengthens the firmness of the skin while reshaping the face contours.

Its light and fine texture, rich in active ingredients, is instantly absorbed by the skin, increasing therefore its efficiency.

## KYRNELLA NATURE COSMETICS PROFESSIONAL TIPS :

Apply the cream to the face and neck with light massage.

Can be used Night and Day, advised in the treatment of couperose, brown age spots, as well as its lifting effect (against wrinkles of aging).

Use it for 21 days that corresponds to cell renewal, stop using 8-10 days and resume the application. This will optimize the care.

- **Proven results after 21 days :**

Couperose : - **95% \***

Brown age spots : - **87% \***

Wrinkle depth : - **40% \***

---

\* Study undertaken amongst 25 women aged 37 - 65

\*\* Study undertaken amongst 30 people during 21 days

---

# Immortelle de Corse

[ *helichrysum italicum* ]

---

---

## Purifying face serum with essential oil of Immortelle

[ 30 ml ]

---



### NATURAL SHINE

Stimulating thanks to the anti-ageing virtues of the Immortelle, this serum activates the skin microcirculation and provides an immediate “radiance boost”. The complexion is illuminated and embellished.

The skin looks instantly smooth. And these multiple properties have also a highly efficient anti-fatigue effect.



## KYRNELLA NATURE COSMETICS PROFESSIONAL TIPS :

Apply on face and neck and massage with light massages.

Can be used day and night , when the skin is tired and in need of a brightness boost.  
The serum could be use alone or with our helichrysum cream.

Use it for 21 days that corresponds to cell renewal, stop using 8-10 days and resume the application. This will optimize the care.

- **Proven results after 21 days :**

Wrinkle depth : - 45% \*

Glowing complexion : + 80% \*\*

---

\* Study undertaken amongst 25 women aged 37 - 65

\*\* Study undertaken amongst 30 people during 21 days

---

# Immortelle de Corse

[ *helichrysum italicum* ]

---

---

## Anti-ageing mask with essential oil of Immortelle

[ 50 ml ]

---



### REPAIRING CARE

Being both refirming and repairing, this mask enhances the renewing of the cells, thanks to the benefits of the organic essential oil of Immortelle.

It smoothes the redness, the skin is softened and its tonicity is restored: it is gifted with radiant beauty.

## KYRNELLA NATURE COSMETICS PROFESSIONAL TIPS :

Apply the mask generously on the skin, after cleansing. Let stand approximately 10 minutes and then rinse with cold water.

May be used once a week. This mask is advised to reduce blotchiness, brown discoloration of aging as well as to prepare the lifting effect of the anti-ageing cream.

- **Proven results from 21 days**

Radiant complexion : **+98%\*\***

Blotchiness : **-96%\***

Brown discoloration of aging : **-89%\***

Depth of wrinkles : **-41%\***

*To be combined with the anti-ageing cream with organic essential oil of Immortelle*

---

\* Study made on 25 women, aged from 37 to 65 years old

\*\* Study made on 30 people during 21 days

---

# Immortelle de Corse

[ *helichrysum italicum* ]

---

---

## Exfoliating face cream with essential oil of Immortelle

[ 50 ml ]

---



### BEAUTY ENHANCER

Thanks to the micro-granules, its peeling effect is efficient and relaxing. The quality of the Immortelle allows a gentle action on the skin, while cleansing it deeply and having an efficient antioxidant outcome.

The skin gets a velvety shine and the complexion is clear and radiant

## KYRNELLA NATURE COSMETICS PROFESSIONAL TIPS :

Apply on the face, avoiding eye and lips area. Massage gently and remove residual product with a cotton pad. Rinse with cold water

May be used once a week as this is a non abrasive product. This face care is advised to reduce blotchiness, brown discoloration of aging as well as to prepare the lifting effect of the anti-ageing cream.

- **Proven results from 21 days**

Radiant complexion : **+98%\*\***

Blotchiness : **-96%\***

Brown discoloration of aging : **-89%\***

Depth of wrinkles : **-41%\***

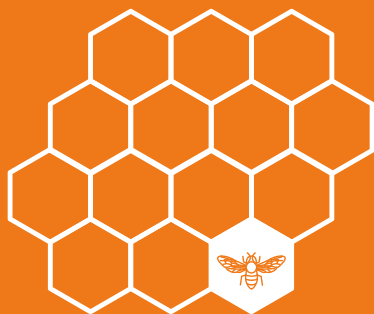
*To be combined with the anti-ageing cream with organic essential oil of Immortelle*

---

\* Study made on 25 women, aged from 37 to 65 years old

\*\* Study made on 30 people during 21 days





---

# Corsican Honey

*[ mele di corsica AOP & AOC ]*

---

## AN UNEQUALLED MOISTURIZING PROPERTY

The Corsican Honey, one of the only French Honeys with a registered designation of origin (A.O.C. : Appellation d'Origine Contrôlée), has prodigious moisturizing and healing qualities.

Its unique components act efficiently on the water molecules of the skin, by restoring its elasticity and its natural beauty.

Thanks to a preserved environment and an unequalled botanical richness, the Honey from Corsica is full of vitamins A, B2, B3, B5, B8, C and D: there lies the secret of its healing and moisturizing virtues.

---

# Corsican Honey

*[ mele di corsica AOP & AOC ]*

---

## CHARACTERISTICS OF CORSICAN HONEY

Corsican Honeys have the European quality signs AOC / AOP « Miel de Corse-Corsica di Mele » and it must meet the following characteristics:

### **1 - Pollen spectrum according to the Corsican AOP**

The pollen analysis (markers) provides information on the Corsican origin of Honey and it even provides its micro- regional origin. If necessary, it identifies the presence of nectar

from oilseed cultivation (type rapeseed or sunflower , however not that spread in Corsica), which leads to the exclusion of such Honey.

### **2 - Water content less than 18%**

Its water content ensures high quality by avoiding any move toward fermentation process.

### **3 - 5-hydroxy -2- methylfurfural (HMF ) content**

less or equal to 10 mg / kg (0,15 grains/2,20 pounds) once packed . H.M.F. Its content, product degradation of fructose is a guarantee of «freshness » of the product, it increases with Honey age.

---

## Corsican Honey

*[ mele di corsica AOP & AOC ]*

---

Honey must come from nectar and / or honeydew foraged by ecotype Corsican bees *Apis mellifera mellifera* Corsica on spontaneous associations with natural vegetation of Corsica. Except citrus plantations, are excluded from the Honey crop species (including Honey rapeseed, sunflower, sainfoin in Spain buckwheat, sainfoin).

The hives must be installed, maintained and organized according local, loyal and constant habits. They must be held in good condition and waxes regularly renewed.

The wax used for executives is pure beeswax. The smoking out beehives is made with natural fuels (pine needles, eucalyptus leaves, rosemary etc.).

Chemical repellents are prohibited.

The feeding of bees is prohibited fifteen days before the honeydews and through to the end of Honey harvesting.

Harvesting periods are held throughout the year. Harvesting should be done on such combs. The Honey must be harvested at full maturity, frames collected must be free of brood.

---

# Corsican Honey

*[ mele di corsica AOP & AOC ]*

---

Honey has a very complex chemical composition.

Indeed, it is composed by :

- large amounts of carbohydrates (about 80 %) mainly fructose ( 38 % ), glucose ( 31 % ), and maltose, sucrose and other polysaccharides ( melibiose, turanose, melezitose ... )
- water ( about 18%)
- proteins (less than 1 % ) , containing a plurality of amino acids : aspartic acid, glutamic acid, alanine, arginine, asparagine, cystine, glycine, histidine, isoleucine, leucine,

lysine, methionine, phenylalanine, proline, serine, tryptophan, tyrosine and valine.

- mineral salts ( from 0.1 to 0.5 % ), which vary with the Honeys. For instance it includes aluminum, silver, arsenic, barium, beryllium, bromine, calcium, chlorine, chromium, copper, iron, lithium, magnesium, manganese, mercury, nickel, gold, phosphorus, potassium, sodium, sulfur, zinc, etc.
- organic acids ( 0.3 % ) in the form of lactones , mainly gluconic acid.
- a number of vitamins, mainly vitamins B1, B2, B3, B5, B6, C and sometimes vitamins A,

---

## Corsican Honey

*[ mele di corsica AOP & AOC ]*

---

B8, B9, D and K.

- minute amount of lipids in the form of triglycerides and acid fat ( palmitic, oleic, and linoleic ).
- enzymes, mainly alpha and beta amylase, glucoamylase, invertase and glucooxydase.
- powerful bacteriostatic.
- many other various biological substances

: flavonoids, alcohols, esters +, aromatic substances as phenylacetic acid, and finally that of the pollen grains in sign botanical origin.

From a elemental viewpoint analysis , the Honey is essentially composed of carbon, hydrogen and oxygen are basic components of the organic compounds.

---

# Corsican Honey

*[ mele di corsica AOP & AOC ]*

---

Patrick D. Paquette , microbiologist, Mcb.A. , RMCCM  
*Infection control consultant*

Since ancient age physicians and healers know antibacterial effects of Honey.

However, it took several millennia to identify the key molecule associated to its antibiotic properties, the « Defensin ».

Defensins are small proteins found both in insects and animals, just like humans. they are involved in the immune defense and serve to combat infections. In bees, secreted defensins are found in Honey, where they retain their immune and antibacterial properties.

Produced by bees from the nectar of flowers the bees collect, Honey has healing properties that the Greeks and Romans used to treat wounds, infections and digestive diseases. Despite scientific studies that have shown that Honey actually had antibiotic properties, it is only since 2010 that its mechanism of action has been elucidated.

---

## Corsican Honey

*[ mele di corsica AOP & AOC ]*

---

The discovery of the Honey component involved in its action against harmful bacteria is due to a Dutch team. They first submitted pathogens or resistant bacteria antibiotic at various concentrations to measure Honey effect.

Microbiologists who conducted this study chose three bacteria involved in cases of food poisoning (*Bacillus subtilis*, *Escherichia coli* and *Staphylococcus aureus*) and 4 more dangerous ones, rather related to hospital-acquired infections. (*Escherichia coli* resistant to beta-lactams, *Staphylococcus aureus* methicillin-resistant (MRSA), *Enterococcus faecium* resistant (VRE) and *Pseudomonas aeruginosa* resistant to ciprofloxacin). All of these bacteria were

killed by concentrations of 10 to 20 % Honey (1-2 mL in 10 mL of Honey bacteria) which confirms the antibacterial action of the latter.

Researchers then eliminated one by one the various Honey components, to identify responsible(s) molecule(s) for its effect against bacteria. Thus, having eliminated among other hydrogen peroxide and the methylglyoxal content in Honey, researchers found that the withdrawal of a protein known under the name « defensin » almost totally reduced Honey capacity to kill bacteria. Once all verification tests made, they were able to conclude that defensin provides the majority of Honey antibacterial power.

A prospective study was conducted from January 1992 to December 1993 in order to test the effectiveness of Honey on wounds of various kinds. It involved 79 patients including 46 males and 33 females with a mean age of 22.3 years (range : 1 to 69 years). The authors present preliminary results of this study.



---

# Corsican Honey

*[ mele di corsica AOP & AOC ]*

---

## METHODS

Honey was poured evenly over the wound cleansed with physiological serum.

Compresses soaked in Honey were packed into the crevices of the wound. Then, it was covered with sterile dry gauze. The dressing was renewed every day.

## RESULTS

### 1° Clinically

The evolution of wounds was followed by their surveying every week. It has shown that the healing occurred in average of 5 to 7 weeks after the beginning of treatment. The time to complete wound healing ranged according to the nature, condition, location and wound area. Thus, burns healed faster than the other wounds (14 and 30 days respectively). Infected wounds were healed in an average of 46 days.

Sluggish wounds, skin ulcers (phagedenic, diabetes, and sickle-cell disease) lower limb healed more slowly than wounds not infected (37 and 14 days respectively).

### 2° On the bacteriological level

Bacteriological samples were performed at baseline and every 15 days. The isolated microorganisms were often *Escherichia coli*, *Pseudomonas pyocyanea*, *Staphylococcus aureus* and *Citrobacter*. Samples (positive) decreased during Honey treatment.

## FOR BEAUTY...

Honey has a pH level close to that of the skin (4 to 6). It is rich in amino acids, proteins, enzymes, mineral salts, pigments, vitamins, antibacterial factors... Its sugars allow it to be moisturizing and emollient. It softens, tones and nourishes skin cells and promotes their proliferation. The most colorful Honeys bring antioxidant substances involved in maintaining youthful skin. Honey is recommended for dry and tired skin, but also for skin acne because of its antiseptic and healing properties. More it nourishes and moisturizes.

Honey is rich in minerals : iron, phosphorus, calcium,... and vitamins.

These properties would be based directly on Honey own physicochemical characteristics (high osmolarity, acidic pH) and its components, including hydrogen peroxide produced by glucose oxidase.

This is also why all the protected environment of Corsica takes importance. This extraordinary ecosystem provides a very high quality raw materials.

---

# Corsican Honey

*[ mele di corsica AOP & AOC ]*

---

## Honey day cream

*[ 50 ml ]*

---



### ULTIMATE HYDRATION

This moisturizing cream brings your skin the elasticity it requires. Thanks to the unique properties of the Honey of Corsica, it is highly concentrated in vitamins (A,B,C and D).

It deeply nourishes the skin and makes it visibly repulped.

## KYRNELLA NATURE COSMETICS PROFESSIONAL TIPS :

Apply in the morning on the face and rub with light massages.

Can be used Night and Day, define if the skin is wrinkled by aging or lack of hydration (vertical lines). Pinch the skin between the fingers and see if the skin pinched spot makes an accordion-like effect, if that is the case, it is advised to use an moisturizing treatment.

Use it for 21 days that corresponds to cell renewal, stop using for 8-10 days and resume the application. this will optimize the care.

- **Proven results after 21 days**

Increased hydration : **+ 66 % \***

Wrinkle depth dehydration : **- 60% \***

---

\* Study undertaken amongst 25 women aged 37 - 65

\*\* Study undertaken amongst 30 people during 21 days

---

# Corsican Honey

*[ mele di corsica AOP & AOC ]*

---

## Honey purifying mask

*[ 50 ml ]*

---



### AN INTENSE WELL-BEING

Optimal for unbalanced skins, this mask has purifying properties and deeply restores the balance of the skin, thanks to its formula, enriched with Honey A.O.C. & A.O.P of Corsica.

Before long after applying it on the face, it provides an intense feeling of well-being and the skin is softened. The elasticity is restored and the skin is revitalized.

## KYRNELLA NATURE COSMETICS PROFESSIONAL TIPS :

Apply the mask generously on the skin, after cleansing. Let stand approximately 10 minutes and then rinse with cold water.

May be used once a week. This mask is advised to prepare the skin for the Honey day cream care.

- **Proven results from 21 days**

Purified and radiant complexion : **+98%\*\***

Hydration : **+75%\***

Depth of dehydration wrinkles : **-71%\***

*To be combined with the Honey day cream*

---

\* Study made on 25 women, aged from 37 to 65 years old

\*\* Study made on 30 people during 21 days



---

# Chestnut

*[ castanea sativa ]*

---

## A HIGH POTENTIAL IN RESTRUCTURING

The chestnut tree is known as the tree of life. In Corsica, its fruit, particularly small-sized, is highly concentrated in minerals, vitamins, trace elements, flavonoids, polyphenols, uronic acid, potassium and aescine.

Those active components, alone or acting in synergy, have an optimal decongestant and invigorating effect on the skin. The Chestnut of Corsica has remarkable benefits, thanks to its purifying and restructuring virtues.

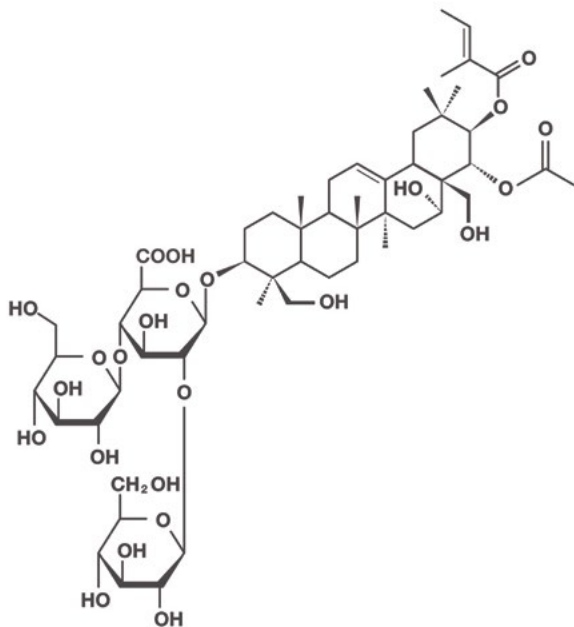


---

# Chestnut

[ *castanea sativa* ]

---



## Aescin (or escin )

is a mixture of saponins with anti-inflammatory and vasoconstrictor effects. Aescin is the main active compound in Chestnut and is responsible for most of its medicinal properties.

### Action :

Escin is a natural molecule widely used in pharmacy and dermatology for its veinotonic properties, decongestant, soothing and draining.

**Synonyms :** escin

**CAS No. :** 6805-41-0

**EINECS :** 229-880-6

## Chemical properties

**Molecular formula :**  $C_{55}H_{86}O_{24}$

**Molecular weight :**  $1\ 131,2569 \pm 0,0572$  g/mol  
C 58,39 %, H 7,66 %, O 33,94 %

## Ecotoxicology

**LD<sub>50</sub> :**  $165\text{ mg}\cdot\text{kg}^{-1}$  (mouse, oral)  
 $2\text{ mg}\cdot\text{kg}^{-1}$  (mouse, i.v.)  
 $38,59\text{ mg}\cdot\text{kg}^{-1}$  (mouse, s.c.)  
 $6,7\text{ mg}\cdot\text{kg}^{-1}$  (mouse, i.p.) 2

**Fresh chestnut fruits are rich source of vitamins C, B1, B2**

It contains in particular :

- carbohydrates (81%)
- lipid (3%)
- proteins (7%)
- water (below 10%)

And minerals such as :

- Potassium (79.5%)
- Phosphorous (8%)
- Magnesium (5%)
- Calcium (4%)
- Chlorine (1.4%)

And other elements in smaller percentage :

- Sodium
- Manganese
- Iron
- Copper
- Aluminium
- Zinc

His lipid composition is characterized by :

- triglycerides C18:1, C18:2, C18:3
- saturated fatty acids

---

# Chestnut

[ *castanea sativa* ]

---

## Chestnut aftershave balm

[ 50 ml ]

---



### FRESH CARE

The aftershave balm is a care providing softness and elasticity to the skin. It soothes the skin irritation caused by the shaving. While having an antiseptic and healing action, it moisturizes and freshens up the skin.

Its light and comfortable texture is easily absorbed by the skin: it is healthy, soothed and protected all day long.

## KYRNELLA NATURE COSMETICS PROFESSIONAL TIPS :

Apply to face and neck after shaving.

Can be used in daily day care, instead of your usual product.

Use it for 21 days that corresponds to cell renewal, stop using 8 to 10 days and resume the application. This will optimize the care.

- **Proven results after 21 days**

Fresher complexion to **98% \***

Buttons after shaving : - **95% \*\***

---

\* Study undertaken amongst 25 men aged 37 - 65

\*\* Study undertaken amongst 30 people during 21 days

---

# Chestnut

[ *castanea sativa* ]

---

## Chestnut eye contour serum

[ 30 ml ]

---



### LUMINOUS GAZE

This serum significantly decreases the signs of tiredness on the eye contour. Thanks to its decongestant and restructuring effect, the extract of Chestnut improves the microcirculation all around this fragile area.

The gaze is soothed and luminous. Fine lines, wrinkles, dark circles and puffiness are smoothed.

## KYRNELLA NATURE COSMETICS PROFESSIONAL TIPS :

Apply to the eye area with fingertips with light and gentle tapping.

Can be used Night and Day, product **suitable for both men and women.**

Use it for 21 days that corresponds to cell renewal, stop using 8-10 days and resume the application. This will optimize the care.

---

---

# Chestnut

*[ castanea sativa ]*

---

## Chestnut purifying and mattifying cream

*[ 50 ml ]*

---



### DUAL ACTION

This cream has multiple benefits: it improves the firmness of the skin, tightens pores and controls the excess of sebum thanks to the Chestnut.

The shine in the mid line is reduced thanks to the instant powdery mat finish. The skin is like silk, the complexion is clear and purified, and your makeup may then stay on lastingly.

## KYRNELLA NATURE COSMETICS PROFESSIONAL TIPS :

Apply the cream and massage the face delicately. Insist on the mid line to get a powdery mat finish.

It is to be used for 21 days, which equals to a renewing cell circle. And then break for 8 to 10 days, to restart the care eventually.

To get an efficient powdery mat finish, the cream is to be used night and day for 21 days.

- **Proven results from 21 days**
  - Radiant and purified complexion : **+98%\*\***
  - Powdery mat finish : **+98%\*\***

---

\* Study made on 25 women, aged from 37 to 65 years old

\*\* Study made on 30 people during 21 days





**KYRNELLA®**

NATURE COSMETICS

FACE ESSENTIAL CARES

**SARL CIRCINELLU**

L'Acquale  
20160 MURZO  
Corse-du-Sud, France

[contact@kyrnella.com](mailto:contact@kyrnella.com)

Tel : +33(0)4 95 50 07 64

**Website**

[www.kyrnella.com](http://www.kyrnella.com)